

# The Carnival of the Animals

Selections  
for Woodwind Quintet

Camille Saint-Saëns  
transcribed by David Bussick

## Introduction and the Lion's Royal March

**Andante maestoso**

Musical notation for the first staff of the Introduction and the Lion's Royal March. It begins with a bass clef and a 4/4 time signature. The melody starts with a whole rest, followed by a half note G2 with a sharp sign, a quarter note A2, and a quarter note B2. This pattern repeats with a half note G2 with a sharp sign, a quarter note A2, and a quarter note B2. Dynamics include *p* and *cresc.*

Musical notation for the second staff of the Introduction and the Lion's Royal March. It features a first ending bracket labeled '1'. The melody consists of eighth notes: G2, A2, B2, G2, A2, B2, G2, A2, B2, G2, A2, B2, G2, A2, B2, G2, A2, B2. Dynamics include *f*.

Musical notation for the third staff of the Introduction and the Lion's Royal March. It features a second ending bracket labeled '2' and the tempo marking **Allegro non troppo**. The melody starts with a half note G2 with a sharp sign, followed by a quarter note A2, and a quarter note B2. Dynamics include *ff* and *f*.

Musical notation for the fourth staff of the Introduction and the Lion's Royal March. It features the tempo marking **Piu allegro** and the dynamic *ff*. The melody consists of eighth notes: G2, A2, B2, G2, A2, B2, G2, A2, B2, G2, A2, B2, G2, A2, B2, G2, A2, B2.

Musical notation for the fifth staff of the Introduction and the Lion's Royal March. It features a third ending bracket labeled '3' and accents (^) over the notes. The melody consists of eighth notes: G2, A2, B2, G2, A2, B2, G2, A2, B2, G2, A2, B2, G2, A2, B2, G2, A2, B2.

Musical notation for the sixth staff of the Introduction and the Lion's Royal March. It features a fourth ending bracket labeled '4' and triplets (3) over the notes. The melody consists of eighth notes: G2, A2, B2, G2, A2, B2, G2, A2, B2, G2, A2, B2, G2, A2, B2, G2, A2, B2.

Musical notation for the seventh staff of the Introduction and the Lion's Royal March. It features triplets (3) over the notes. The melody consists of eighth notes: G2, A2, B2, G2, A2, B2, G2, A2, B2, G2, A2, B2, G2, A2, B2, G2, A2, B2.

Musical notation for the eighth staff of the Introduction and the Lion's Royal March. It features a large slur over the notes and triplets (3) over the notes. The melody consists of eighth notes: G2, A2, B2, G2, A2, B2, G2, A2, B2, G2, A2, B2, G2, A2, B2, G2, A2, B2.

Bassoon

2

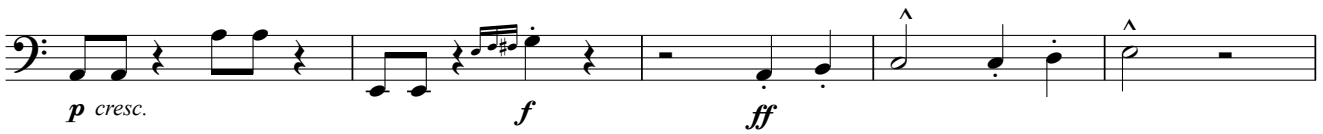
5



6



7



8

